

PALETTE of POSSIBILITIES

*Perspectives from the
Child Welfare System*

CALL TO ARTISTS

Apply by **June 9, 2024**

The **Florida Institute for Child Welfare** invites artists of all ages and technical abilities to participate in an online exhibition aimed at amplifying the voices and experiences within Florida's child welfare system. Accepted artworks that meet the outlined specifications will be featured in an online gallery. In addition, select pieces will be prominently displayed in our Institute's conference rooms and meeting spaces to further elevate the narratives and perspectives within the child welfare system to our staff and partners.

We believe in the power of creative expression as a form of profound communication and are excited to provide an outlet for the voices of those with lived experiences in the child welfare system. Your contributions will not only be showcased but will also contribute to a meaningful dialogue surrounding growth, support, and wisdom.

Submissions will be accepted until 11:59 PM ET on Sunday, June 9, and artists will be notified of the selection results by July 1, 2024.

Thank you for your potential contribution to this important exhibition!

See next pages for detailed guidelines for submission and specifications.



**FLORIDA
INSTITUTE
FOR CHILD
WELFARE**

AT FLORIDA STATE UNIVERSITY

The vision of the **Florida Institute for Child Welfare** is to provide nationally acclaimed child welfare research, training resources, and policy and practice implementation guidance with our partner organizations in support of vulnerable children and families in Florida, in particular, those who become involved in the child welfare system.

Learn more about our work and partnerships at [FICW.FSU.EDU](https://www.ficw.fsu.edu).



*Perspectives from the
Child Welfare System*

Guidelines & Artwork Specifications

Thank you for your interest in the **Palette of Possibilities** exhibition with the Florida Institute for Child Welfare. We invite artists of all ages and technical abilities to submit artwork that meets the specifications outlined here.

Participation Requirements

Artists must be connected to the child welfare field in one of the following ways:

- A child (**0-17**) with lived experience in Florida's child welfare system
- A Florida resident (**18+**) with lived experience in the child welfare system

Artwork Specifications

Artwork created within the following categories are welcomed:

- Photography
- 2-dimensional art such as drawing, painting, fiber art, or collage
- Poetry
- Digital artwork (must meet specified criteria on next page)

Please note that submissions in the form of video, music, animation, and sculpture will **not** be considered for this exhibition.

Suggested Content Themes

Artists are encouraged to explore the following content themes:

- Growth/Resilience
- Support/Love
- Wisdom/Knowledge

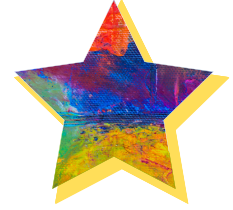
Content Guidelines

While the themes above are suggested, artwork under a different theme is also welcome. However, to be considered, all submitted pieces must be original work and avoid:

- Political affiliation
- Violence/hate
- Nudity/vulgarity
- Use of licensed images like cartoon characters, sports teams, or any appropriated materials that are not original work.
- AI-generated imagery

Submission Options & Instructions

Artists can submit **up to three** artworks for consideration using the form available here: bit.ly/FICW-ART. For sending in artwork, artists can choose between two methods:



- **Online:** Artists supply digital files that meet the specifications outlined below. The Institute will coordinate printing reproductions for display purposes. Artists retain ownership of their original artwork, while the Institute retains ownership and use of the printed reproductions.
 - **Instructions:** Artwork must be in JPEG, PDF, or PNG format within the application portal [Insert Link], with a minimum resolution of 300 dpi. The Institute cannot accept digital submissions through email or other means like portable hard drives.
- **Mail-in:** Artists can mail in their physical artwork if preferred. Please note: all artwork submitted in this method will not be returned.
 - **Instructions:** Artists/Guardians/Case Managers can contact LH23M@FSU.EDU for a prepaid envelope after submitting the online form. The Institute will photograph artwork for display in the online gallery, and select originals will be framed and displayed in our office.

All submissions must include a brief artist statement (up to 250 words) summarizing the inspiration behind the artwork and its connection to one of the content themes (if applicable). Artists are encouraged to write what they are comfortable sharing publicly. For a guide on writing an artist statement, please refer to the next two pages.

For questions or additional support, email abachmann@fsu.edu.

Writing an Artist Statement

What is an artist statement?

An artist statement is a message from an artist, written in first- or third-person language, that explains their art or offers additional context. Artists use these statements to clarify their intention or perspective, and verbally express their thoughts and feelings with others.

Why is it helpful?

Including an artist statement can help guide the viewer to details and specific meaning within the artwork. It provides an additional mode of communication between the viewer and the artist.

What should it include?

Artist statements can include one or more of the following:

- **Introduction:** This introduces the artist and provides a brief overview of their background or interests as it relates to the artwork
- **Personal Perspective:** Artists share their personal view of their work, discussing their motivations, goals, and the significance of their art to them.
- **Themes and Concepts:** Artists explain the themes and concepts explored in their work, providing insight into the ideas they aim to convey.
- **Techniques and Processes:** Artists describe the techniques, materials, and processes they use to create their art, offering further information on their creative methods.
- **Audience Engagement:** Artists may also address how they hope their audience will engage with their work and the emotions or reactions they aim to evoke.
- **Inspiration and Influences:** Artists may discuss what inspires them and any influences that shape their work, such as personal experiences, culture, people, or world events.

Reminder: Only share what you are comfortable sharing with others. Some artist statements are purposefully very short and leave more open to interpretation.

Examples of Artist Statements

Example #1

This drawing, inspired by photos and mementos from her childhood, offers a collective snapshot of pivotal experiences from Jane's early life. Her hope in highlighting these moments is to not only give insights into her personal journey but also to emphasize the positive effect of compassion.

Example #2

I am inspired by Jazz musicians and how they express their emotions through their music. I listened to music while painting this artwork and allowed my emotions to guide my brush. This artwork reflects my hope for love and acceptance, and the path I've traveled.

Selection & Exhibition Information

Selection Criteria: Artists of all ages and technical abilities are encouraged to participate. All submissions that meet the artwork requirements will be included in the online exhibition. Select artworks will be included for display at the offices of the Florida Institute for Child Welfare based on content, creativity, and elements of art such as color and composition.

Notification of Acceptance: Artists whose work is selected for exhibition will be notified by July 1, 2024. Please ensure that your contact information is accurate in your submission.

Exhibition Dates: The online exhibition will begin August 1, 2024. Select original artworks and/or reproductions will also be displayed in person at the Florida Institute for Child Welfare, located at 2139 Maryland Circle, Tallahassee, FL 32303 on an ongoing basis.

Sales and Commission: Submitted artwork that is digitally reproduced or displayed in its original form will not be made available for sale and will remain in the collection of the Florida Institute for Child Welfare. Artists who retain their original artworks can make their work available for sale independently. The Florida Institute for Child Welfare will not retain a commission on any or all sales.

For questions or additional support, email abachmann@fsu.edu.